



Identification of Invasive Alien Species using DNA barcodes

Royal Belgian Institute of Natural Sciences
Rue Vautier 29
1000 Brussels, Belgium
+32 (0)2 627 41 23



Royal Museum for Central Africa
Leuvensesteenweg 13,
3080 Tervuren, Belgium
+32 (0)2 769 58 54



General introduction to this factsheet

The Barcoding Facility for Organisms and Tissues of Policy Concern (BopCo) provides an expertise forum to facilitate the identification of biological samples of policy concern in Belgium and Europe. BopCo is funded by the Belgian Science Policy Office (Belspo), and it represented part of the Belgian federal contribution to the European Research Infrastructure Consortium LifeWatch (November 2015 – February 2022).

Non-native species which are being introduced into Europe, whether by accident or deliberately, can be of policy concern since some of them can reproduce and disperse rapidly in a new territory, establish viable populations and even outcompete native species. As a consequence of their presence, natural and managed ecosystems can be disrupted, crops and livestock affected, and vector-borne diseases or parasites might be introduced, impacting human health and socio-economic activities. Non-native species causing such adverse effects are called Invasive Alien Species (IAS). In order to protect native biodiversity and ecosystems, and to mitigate the potential impact on human health and socio-economic activities, the issue of IAS is tackled in Europe by EU Regulation 1143/2014 of the European Parliament and Council. The IAS Regulation provides for a set of measures to be taken across all member states. The list of *Invasive Alien Species of Union Concern* is regularly updated. However, to implement the proposed actions, methods for accurate species identification are required when suspicious biological material is encountered.

Because morphology-based species identifications are not always possible (e.g. cryptic species, trace material, early life-stages), the purpose of the present work is to investigate and evaluate the usefulness of DNA sequence data to identify each of the IAS included in the EU Regulation. The results are presented as factsheets (one per IAS) compiled using publicly available DNA sequence data and information aggregated from various sources. Each factsheet consists of two major parts: (i) a short introduction to the specific IAS, with information on its taxonomy and current occurrence/distribution in Europe, (ii) an investigation with respect to the usefulness of publicly available DNA sequences to identify this IAS using DNA barcoding to the taxonomic level stated in the EU list. For further information about the reasoning behind the applied approach and details on the materials and methods utilised, please see below and Smitz *et al.* [1].

More info about BopCo on <https://bopco.be> or contact us via bopco@naturalsciences.be.

More info on the EU Regulation on http://ec.europa.eu/environment/nature/invasivealien/index_en.htm.

Procambarus clarkii

(Girard, 1852)

Common names:

English: red swamp crayfish/crawfish, Louisiana crayfish, crawdaddy

French: écrevisse rouge de marais, écrevisse de Louisiane

German: Louisianakrebs, rote Amerikanische Sumpfkrebs

Dutch: rode Amerikaanse rivierkreeft, rode rivierkreeft, Amerikaanse rivierkreeft



Last update: January 2019

General information on *Procambarus clarkii*

Classification

Kingdom	Phylum	Class	Order	Family	Genus
Animalia	Arthropoda	Malacostraca	Decapoda	Cambaridae	<i>Procambarus</i>

Species in the same genus: N = 167 [2]

Note:

Infra-species level: N = 0

Note: To our knowledge, no subspecies have been described.



Native range: [3, 4]

North-eastern Mexico and south-central United States of America.

Invasive range: [3, 5–7]

Europe (geographical):

Belgium, Cyprus, France, Germany, Italy, Netherlands, Poland, Portugal, Slovenia, Spain, Switzerland, United Kingdom.

For more detailed locality information and the most recent distribution updates, please visit:

<https://easin.jrc.ec.europa.eu/spexplorer/species/factsheet/R12250>

<https://www.gbif.org/species/2227300>

Outside Europe (geographical):

Belize, Brazil, China, Costa Rica, Dominican Republic, Ecuador, Egypt, Georgia, Israel, Japan, Kenya, Mexico, Philippines, Puerto Rico, South Africa, Sudan, Taiwan, Uganda, United States of America (Alaska, Arizona, California, Colorado, Florida, Georgia, Hawaii, Idaho, Indiana, Maryland, Nevada, New Mexico, New York, North Carolina, Ohio, Oregon, South Carolina, Utah, Wisconsin), Venezuela, Zambia.

Morphology, biology, invasion, negative effects and remedies

For more information on *Procambarus clarkii* please see the references and online information listed at the end of this document.



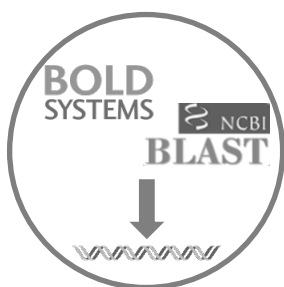
Species identification based on DNA barcodes

Introduction

DNA barcoding is a species identification method that uses a short genetic sequence (DNA barcode) to compare an unknown sample to a database of reference sequences with known species affiliations. The underlying rationale is that the divergence of nucleotide sequences among different species is larger than the nucleotide divergence between sequences within a species. DNA barcoding can facilitate the identification of IAS samples, especially when morphological characteristics are absent or useless. However, to assure correct species identifications, reference libraries need to include a sufficiently large number of sequences of (i) the IAS under investigation to assess the intraspecific genetic divergence, (ii) the closely related species to evaluate the interspecific genetic divergence, and (iii) the different geographical areas covering the distribution range (native and invasive) of the IAS to detect potential population structure or local hybrids.

In this context, BopCo evaluated the inclusion of the IAS and their close relatives in both publicly available reference libraries BOLD (www.boldsystems.org/) and GenBank (www.ncbi.nlm.nih.gov/nuccore/) to estimate the reliability with which a species identification can be obtained using DNA barcoding.

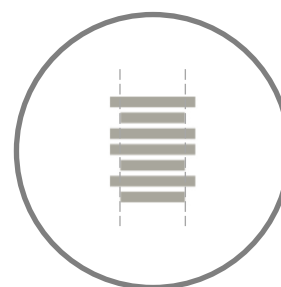
Material and Methods [1]



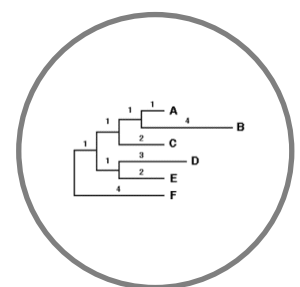
Download all sequence data available for the genus



Filtering the data and selecting 'promising' markers



Aligning and trimming of the sequences



Building Neighbour-Joining tree with Bootstrap support

Conclusion

Based on the present evaluation of the available sequence data, COI is the most reliable DNA marker for the identification of *Procambarus clarkii*. To allow for a better evaluation of the performance of the marker for species identification, additional sequences for the poorly or unrepresented congeners should be added to the analyses.

Discussion

DNA markers for which *Procambarus* sequences were available, were downloaded from GenBank and BOLD for all represented species of the genus *Procambarus*. Five DNA markers were evaluated (Table 1).

In the NJ-tree for **COI**, the numerous *P. clarkii* sequences from both native and invasive locations cluster together with near-maximum support, except for one (GenBank accession number JX127971) which is placed within a cluster of *P. llamasii*. This latter sequence might involve a misidentification. If so, COI represents a promising DNA marker for the identification of *P. clarkii*. However, 66 of the 83 species in the NJ-tree are represented by one unique sequence only, while 84 of all *Procambarus* congeners are not represented at all (Table 2). Adding the missing congeners as well as more sequences per species should allow to better evaluate the performance of COI for the identification of *P. clarkii*.

None of the four other DNA markers evaluated (**16S**, **12S**, **28S**, and **H3**) recover *P. clarkii* as a supported cluster. Also, many species are represented by only one unique sequence. Hence, it is premature to evaluate the ability of these DNA markers to differentiate *P. clarkii* from other *Procambarus* species.



Table 1: Overview of the encountered issues concerning the DNA-based identification of the IAS [1]: (1) Insufficient publicly available DNA sequences of the IAS to capture the intra-species divergence; (2) Poor geographical coverage of the IAS sequences (native or invasive range missing); (3) The IAS sequences do not form supported clusters; (4) Potential misidentification of a specimen which influences the clustering of the IAS sequences; and (5) Not all congeneric species are represented in the final NJ-tree. An 'X' indicates that the issue was encountered.

Markers analysed	1	2	3	4	5
COI			X	X	X
16S			X		X
12S			X		X
28S	X		X		X
H3	X		X		X

Table 2: Publicly available sequences downloaded (November 2018) from BOLD and GenBank (including sequences extracted from mitochondrial genomes) which were withheld as reliable and informative in the final alignment that was used for building the NJ-trees. The species names follow [2]. An 'X' indicates that at least two sequences were used in the final alignment, a '1' indicates only one sequence was available for the final alignment. The list of species is limited to those members of *Procambarus* for which at least one sequence was used in any of the NJ-trees.

Species in genus	COI	16S	12S	28S	H3
<i>Procambarus acherontis</i>	1	1	1	1	1
<i>Procambarus achilli</i>	1	1			
<i>Procambarus acutissimus</i>	1	1	1	1	1
<i>Procambarus acutus</i>	X	X	X	X	X
<i>Procambarus advena</i>	1	1	1	1	1
<i>Procambarus alleni</i>	X	X	X	1	X
<i>Procambarus ancylus</i>	1	1	1	1	1
<i>Procambarus apalachicola</i>	1	1	1	1	1
<i>Procambarus attiguus</i>	1	1	1	1	1
<i>Procambarus barbatus</i>	1		1	1	1
<i>Procambarus bivittatus</i>	1	1	1	1	1
<i>Procambarus blandingii</i>	1	1	1	1	1
<i>Procambarus bouvieri</i>		1	1		1
<i>Procambarus braswelli</i>		1			
<i>Procambarus caballeroi</i>		1			
<i>Procambarus capillatus</i>	1	1	1	1	1
<i>Procambarus caritus</i>	1	1	1	1	1
<i>Procambarus ceruleus</i>	1	1			
<i>Procambarus chacalli</i>		1			
<i>Procambarus chacei</i>		1	1		1
<i>Procambarus clarkii</i>	X	X	X	X	X
<i>Procambarus clemmeri</i>		1			
<i>Procambarus contrerasi</i>		1			
<i>Procambarus cubensis</i>		1			
<i>Procambarus cuetzalanae</i>		1			
<i>Procambarus curdi</i>		1	1		
<i>Procambarus delicatus</i>		1	1		
<i>Procambarus digueti</i>		1			
<i>Procambarus dupratzi</i>		1			
<i>Procambarus econfinae</i>	1	1	1	1	1
<i>Procambarus enoplosternum</i>	X	1	1	1	1
<i>Procambarus epicyrtus</i>	1	1		1	1
<i>Procambarus erichsoni</i>	1	1			
<i>Procambarus erythropros</i>	1	1	1	1	1
<i>Procambarus escabiensis</i>	1	1	1	1	1
<i>Procambarus evermanni</i>	1	1	1	1	1
<i>Procambarus fallax</i>	X	X	X	1	X
<i>Procambarus fallax f. virginalis</i>	X	X	X		X
<i>Procambarus franzi</i>	1	1	1	1	1
<i>Procambarus geminus</i>	1	1	1	1	1
<i>Procambarus geodytes</i>	1	1		1	1



Species in genus	COI	16S	12S	28S	H3
<i>Procambarus gibbus</i>		1			
<i>Procambarus gonopodcristatus</i>		1			
<i>Procambarus hagenianus</i>		1			
<i>Procambarus hayi</i>		1			
<i>Procambarus hidalgoensis</i>		1			
<i>Procambarus hirsutus</i>		1			
<i>Procambarus hoffmanni</i>	1	1			
<i>Procambarus horsti</i>	1	1	1	1	1
<i>Procambarus hortonhobbsi</i>		1			
<i>Procambarus howellae</i>	1	1	1	1	1
<i>Procambarus hubbelli</i>	1	1	1	1	1
<i>Procambarus incilis</i>	1	1	1	1	
<i>Procambarus kensleyi</i>	1	1			
<i>Procambarus kilbyi</i>		1			
<i>Procambarus latipleurum</i>	1	1	1	1	1
<i>Procambarus leitheuseri</i>	1	1	1	1	1
<i>Procambarus leonensis</i>	1	1	1	1	1
<i>Procambarus lepidodactylus</i>	1	1	1	X	1
<i>Procambarus liberorum</i>	X	X	X	X	X
<i>Procambarus litosternum</i>	1	1	1	1	1
<i>Procambarus llamasi</i>	X	X	X	X	X
<i>Procambarus lucifugus</i>	X	X	X	X	X
<i>Procambarus lunzi</i>	1	1	1	1	1
<i>Procambarus luxus</i>	1	1	1	1	1
<i>Procambarus mancus</i>	1	1	1	1	1
<i>Procambarus milleri</i>	1	1	1	1	1
<i>Procambarus morrissi</i>	1	1	1	1	1
<i>Procambarus natchitochae</i>	1	1			
<i>Procambarus nigrocinctus</i>	1	1	1		
<i>Procambarus nueces</i>	1	1	1		1
<i>Procambarus okaloosae</i>	1	1	1	1	1
<i>Procambarus orcinus</i>	1	1	1	1	1
<i>Procambarus ouachitae</i>		X			
<i>Procambarus paeninsulanus</i>	X	X	1	1	1
<i>Procambarus pallidus</i>	1	1	1	1	1
<i>Procambarus paradoxus</i>		1			
<i>Procambarus parasimulans</i>		1			
<i>Procambarus pearsei</i>		1			
<i>Procambarus pecki</i>		1			
<i>Procambarus pictus</i>	1	1	1	1	1
<i>Procambarus pubescens</i>	1	1	1	1	1
<i>Procambarus pubischelae</i>	X	X	X	X	X
<i>Procambarus pycnogonopodus</i>	1	1	1	1	1
<i>Procambarus pygmaeus</i>	1	1	1	1	1
<i>Procambarus raneyi</i>		1			
<i>Procambarus rathbunae</i>	1	1	1	1	1
<i>Procambarus regalis</i>		1			
<i>Procambarus regiomontanus</i>	1	1	1	1	
<i>Procambarus reimeri</i>	1	X	X		
<i>Procambarus riojae</i>	1	1			
<i>Procambarus roberti</i>		1			
<i>Procambarus rogersi</i>	X	X	X	X	X
<i>Procambarus seminolae</i>	1	1	1	1	1
<i>Procambarus shermani</i>	1		1	1	1
<i>Procambarus simulans</i>	X	1	1	1	
<i>Procambarus spiculifer</i>	X	X	1	1	1
<i>Procambarus steigmani</i>	1	1	1	1	
<i>Procambarus strenthi</i>		1			
<i>Procambarus suttkusi</i>	1	1	1	1	1
<i>Procambarus talpoides</i>	1	1	1	1	1
<i>Procambarus tenuis</i>	X	X	X	X	X
<i>Procambarus teziutlanensis</i>	1	1			
<i>Procambarus tlapacoyanensis</i>	1	1			



Species in genus	COI	16S	12S	28S	H3
<i>Procambarus toltecaae</i>	1	1	1	1	1
<i>Procambarus troglodytes</i>	1	1	1	1	1
<i>Procambarus triculentus</i>	1	1	1	1	1
<i>Procambarus tulaneii</i>		1			
<i>Procambarus vazquezae</i>	X	1			
<i>Procambarus versutus</i>	1	1	1	1	1
<i>Procambarus viaeviridis</i>	1				
<i>Procambarus vioscai</i>		1			
<i>Procambarus xochitlanae</i>	1	1			
<i>Procambarus youngi</i>	1	1	1	1	1
<i>Procambarus zihuatlensis</i>		1			
<i>Procambarus zonangulus</i>	X	1	1	1	
TOTAL species (1 sequence only)	83(66)/167	113(98)/167	73(61)/167	67(58)/167	66(55)/167

For a more elaborate discussion of the available databases, the sequence selection process, the outcome of the NJ-tree analyses, the usefulness of the investigated DNA sequences for species identification, as well as information on how to send samples for analyses please contact BopCo directly.



References and online information

Online information

<https://www.cabi.org/isc/datasheet/67878>
<http://www.iucngisd.org/gisd/species.php?sc=608>
<https://nas.er.usgs.gov/queries/factsheet.aspx?SpeciesID=217>
<http://www.fao.org/fishery/species/3454/en>
<http://www.nonnativespecies.org/factsheet/downloadFactsheet.cfm?speciesId=2836>
<https://dnr.wi.gov/lakes/cbcw/publications/wt-918.pdf>
<https://species.biodiversityireland.ie/profile.php?taxonId=21755&taxonName=clarkii&keyword=Invasive%20Species%20Of%20Union%20Conce>
http://www.dfw.state.or.us/conservationstrategy/invasive_species/docs/RedSwampCrayfishFactSheet.pdf
<https://www.nvwa.nl/documenten/dier/dieren-in-de-natuur/exoten/risicobeoordelingen/factsheet-rote-amerikaanse-rivierkreeft> [NL]

Picture credits

Page 1: *Procambarus clarkii*, Amerikaanse rode rivierkreeft By webted [CC BY-NC-ND 2.0]
Page 2 (left): Red Swamp Crayfish (*Procambarus clarkii*) By Andrew Cannizzaro [CC BY 2.0]
Page 2 (right): *Procambarus clarkii* taken near a lake in France, By Duloup [CC BY-SA 3.0]

References

- [1] N. Smits, S. Gombeer, K. Meganck, A. Vanderheyden, Y. R. Van Bourgonie, T. Backeljau, and M. De Meyer, "Identifying IAS based on DNA barcoding using currently available sequence data: details on applied material and methods." 2019. [Online]. Available from: <https://bopco.be/output/iasfactsheets>.
- [2] K. A. Crandall and S. De Grave, "An updated classification of the freshwater crayfishes (Decapoda: Astacidea) of the world, with a complete species list" *J. Crust. Biol.*, vol. 37, no. 5, pp. 615–653, Sep. 2017.
- [3] European Commission - Joint Research Centre - European Alien Species Information Network (EASIN). Available: <https://easin.jrc.ec.europa.eu/>.
- [4] R. Nagy, A. Fusaro, and W. Conard, "*Procambarus clarkii* (Girard, 1852): U.S. Geological Survey, Nonindigenous Aquatic Species Database, Gainesville, FL" 2019. [Online]. Available: <https://nas.er.usgs.gov/queries/factsheet.aspx?SpeciesID=217>.
- [5] European Alien Species Information Network - EASIN, "Species Search and Mapping." [Online]. Available: <https://easin.jrc.ec.europa.eu/spexplorer/>.
- [6] FAO Fisheries and Aquaculture Department., "Species Fact Sheets: *Procambarus clarkii* (Girard, 1852)" *FAO Fisheries and Aquaculture Department*, 2019. [Online]. Available: <http://www.fao.org/fishery/species/3454/en>.
- [7] CABI, "*Procambarus clarkii* [original text by Jay Huner]." *Invasive Species Compendium*. Wallingford, UK: CAB International., 2019. [Online]. Available: <https://www.cabi.org/isc>.

To cite this factsheet, please use

Barcoding Facility for Organisms and Tissues of Policy Concern, 2019. Factsheet on *Procambarus clarkii*; January 2019. In: Identification of Invasive Alien Species using DNA barcodes. BopCo, Belgium. Available from: <https://bopco.be/output/iasfactsheets>, accessed on DD-MM-YYYY.

DISCLAIMER: The information represented in this factsheet has been compiled from many different sources. Every reasonable effort has been made to ensure that the material presented is accurate and reflects the current (see date last update) scientific knowledge. However, recent changes in e.g. taxonomy and distribution, or the publication of additional reference sequences may not be implemented. The views which are expressed in the "Conclusion" are those of the author(s) and have not been peer-reviewed. BopCo does not guarantee the accuracy of the data included in this factsheet. The content of the factsheet is for information only and is not intended as legal advice. BopCo may not be held responsible for the use which may be made of the information contained therein. If you should notice any issues considering the content of this factsheet, or if you would like to contribute any additional information to it, please contact us through bopco@naturalsciences.be.

